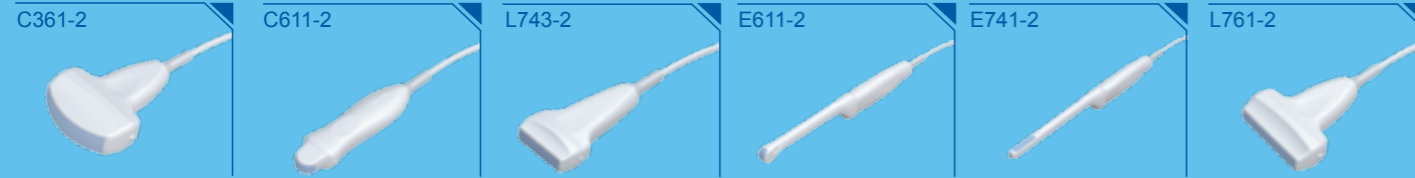


# Technical Specification



## General:

Imaging mode: B, 2B, 4B, B+M, M, and PW  
 Gray scale levels: 256  
 Display: 12.1" TFT-LCD  
 Transducer frequency: 2.0-10.0MHz  
 Transducer connector: 2 standard

## Beam Forming:

Phase Inversion Harmonic Imaging  
 Multi-Beam Technology  
 Synthetic Receiving Aperture  
 Dynamic Receiving Focusing  
 Real-time Dynamic Aperture  
 Dynamic Frequency Scanning  
 Dynamic Apodization

## Scanning angle:

Up to 155 degrees (transducer dependent)

## Scanning depth (mm):

From 19 to 324 (transducer dependent)

## Applications:

Abdomen, obstetrics, gynecology, small parts, musculoskeletal, pediatrics, cardiology, peripheral vascular, urology

## Functions:

Cine loop: 256-frame bidirectional cine-loop

Zoom: x1.0, x1.2, x1.4, x1.6, x2.0, x2.4, x3.0, x4.0 in distance

Panoramic zoom in real-time and freeze

## Storage media:

Built-in Flash, internal large capacity data storage

## Built-in image archive:

504MB built-in image storage

Body marks: >130 types

Transducer auto-detection

## Display:

Date, Time, Probe Frequency, Frame Rate, Patient Name, Patient ID, Hospital Name, Depth, Frame Rate, Exam Type, Measurement Values, Body Marks, Annotations, Probe Position

## Others:

### Peripheral ports:

S-video output: 1  
 Video output: 1  
 VGA output: 1  
 USB port: 2  
 Ethernet port: 1  
 Remote control: 1  
 Footswitch port: 1  
 Power supply: 100V-240V ~ 50Hz/60Hz  
 Lithium battery: Continuous operation for up to 2 hours  
 Dimensions: 330mm (13.0") (L) x 220mm (8.7") (W) x 320mm (12.6") (H)  
 Net weight: 7.1kg (15.7 lb)

## Imaging Processing:

Pre-processing: Dynamic Range  
 Frame Persist  
 Gain  
 8-segment TGC adjustment  
 IP (Imaging Process)  
 Post-processing: Gray map  
 Speckle Reduction Technology  
 Pseudo-color  
 Gray Auto Control  
 Black/white invert  
 Left/right invert  
 Up/down invert  
 Image rotation at 90° interval

## Measurement & Calculation:

B-mode: Distance, circumference, area, volume, ratio % stenosis, histogram, and angle  
 M-mode: Distance, time, slope, and heart rate  
 Doppler: Time, heart rate, velocity, acceleration, trace, and RI  
 Software packages: General, obstetric, gynecology, small parts, orthopedics, cardiology, peripheral vascular and urology

## Standard configurations:

DUS 60 main unit  
 12.1" TFT-LCD monitor  
 Two transducer connectors  
 Pulsed wave Doppler  
 Multiple-pseudo-color Imaging  
 256-frame cine loop memory  
 504MB built-in image storage  
 Two USB ports  
 Measurement & calculation software packages

## Options:

Convex array transducer:  
 C361-2 (2.5/3.5/4.5/H5.0/H5.4MHz)  
 Micro-convex array transducer:  
 C611-2 (5.5/6.5/7.5/H9.0/H9.4MHz)  
 Linear array transducer:  
 L761-2 (6.5/7.5/8.5/H9.0/H9.4MHz)  
 Linear array transducer:  
 L743-2 (6.5/7.5/8.5/H9.0/H9.4MHz)  
 Endovaginal transducer:  
 E611-2 (5.5/6.5/7.5/H9.0/H9.4MHz)  
 Endorectal transducer:  
 E741-2 (6.5/7.5/8.5/H9.0/H9.4MHz)  
 Needle-guide brackets for transducers  
 Large capacity data storage  
 Video printer  
 Laser printer  
 Inkjet printer  
 Footswitch  
 Li-ion battery  
 Mobile trolley  
 Hand-carry bag  
 DICOM 3.0  
 UMS100 workstation software

# DUS 60

Digital Ultrasonic Diagnostic Imaging System



## About Edan

Edan is a healthcare company dedicated to improving the human condition around the world by delivering value-driven, innovative and high-quality medical products and services. For over 20 years, Edan has been pioneering a comprehensive line of medical solutions that address a broad range of healthcare practices including:

- Diagnostic ECG
- Patient Monitoring
- OB/GYN
- Ultrasound Imaging
- Point-of-Care Testing
- *In-Vitro* Diagnostics
- Veterinary

Healthcare professionals around the world depend on Edan's breakthrough medical technologies and outstanding customer support.



### U.S. and Canada inquiries:

Quince Medical & Surgical | 30 Chapin Road Suite 1209 Pine Brook, NJ 07058  
 +1973-687-0102 www.quincemedical.com | sales@quincemedical.com

### Inquiries outside of the U.S. and Canada:

Edan Instruments, Inc. | No.15 Jinhui Rd., Jinsha Community, Kengzi Subdistrict, Pingshan District, Shenzhen | 518122 P.R. China  
 +86.755.26898326 | www.edan.com.cn | info@edan.com.cn

© 2019 Edan Instruments, Inc. All rights reserved. Features and specifications are subject to change without prior notice. No reproduction, copy or transmission may be made without written permission. Not all products or features are available in all territories, contact Edan for local availability.

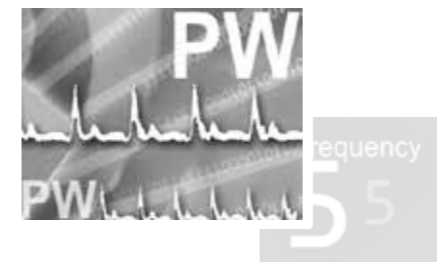


ENG-US-DUS 60-V2.5-20190222



# DUS 60

Digital Ultrasonic Diagnostic Imaging System



- Powerful technologies to increase your diagnostic confidence
  - Phase Inversion Harmonic Imaging technology provides best-in-class image quality
  - PW Doppler supplies more hemodynamics information
  - Five-frequency transducers increase versatility



- Go anywhere you need to go
  - Compact and lightweight design facilitates mobility
  - Built-in battery provides up to two hours of imaging
  - Large capacity data storage



- Intuitive user-friendly design
  - One touch image optimization via smart image processing key
  - Backlit, easy-to-use control panel
  - User-defined keys to customize your work-flow



- Practical tools enhance efficiency
  - Intelligent 8-segment TGC for precise adjustment
  - Multi-format data transfer via USB and DICOM
  - Multiple-pseudo-color options enhance image presentation

The DUS 60 Digital Diagnostic Ultrasound System is an impressive compact ultrasound system that provides superb value and outstanding imaging quality across the entire range of general imaging applications.



36 Week Placenta/Cord



Breast Cyst



Liver/Kidney



Ovary



Popliteal Vein/Artery



Testicle



Transverse Pancreas



Uterine Fibroid