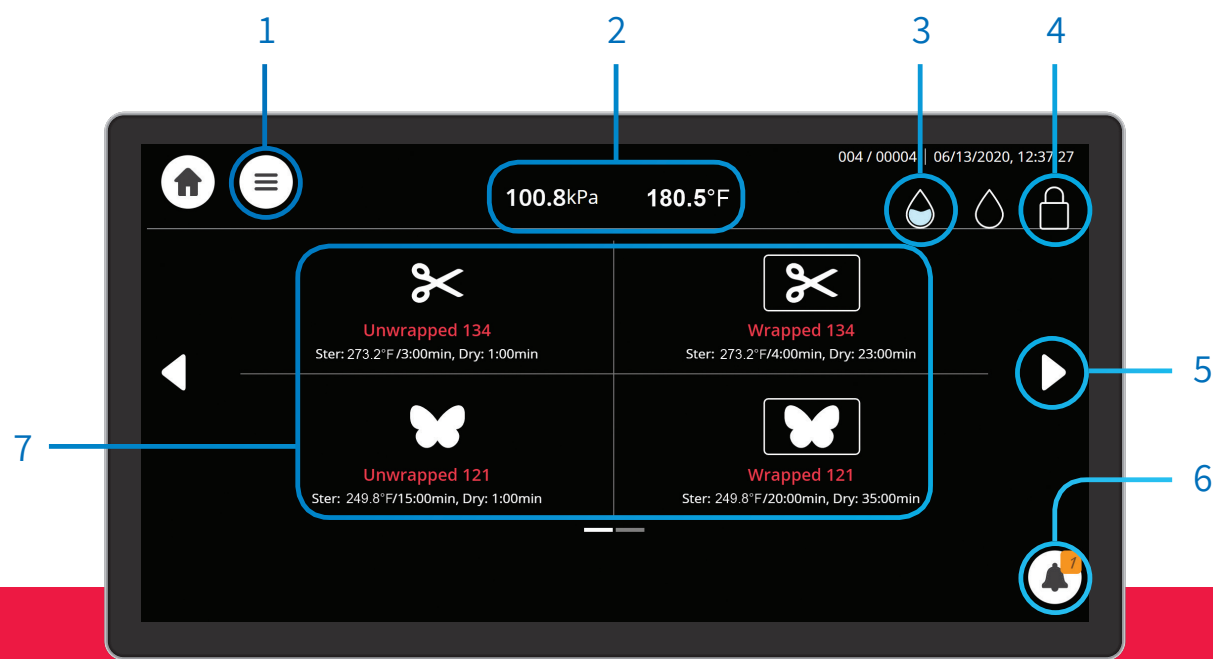


T-Edge 10 Quick Guide



Main Screen Orientation

- | | | | |
|----------------------------|----------------------------|--------------------------------|--------------------------------|
| 1 Settings | 4 Door Status | 7 Changing Cycles (Class S) | 7 Changing Cycles (Class B) |
| 2 Pressure / Temp. Gauge | 5 Toggle Between Screens | ✂ Unwrapped Instruments 270° F | ✂ Unwrapped Instruments 273° F |
| 3 Water Level | 6 Alerts | ✂ Wrapped Pouches 270° F | ✂ Wrapped Pouches 273° F |
| | | 🦋 Handpieces | 🦋 Wrapped Delicate 250° F |
| | | 🦋 Unwrapped delicate 250° F | 🦋 Unwrapped Delicate 250° F |

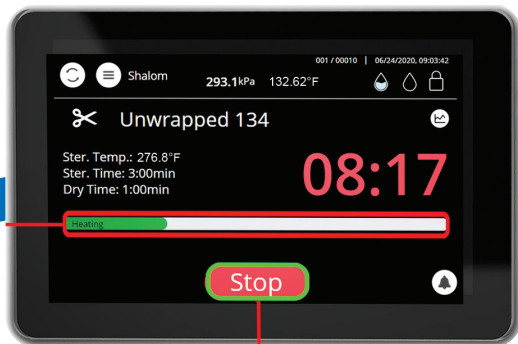
Choosing the sterilization cycle



1 Insert the pouches or instruments you want to sterilize



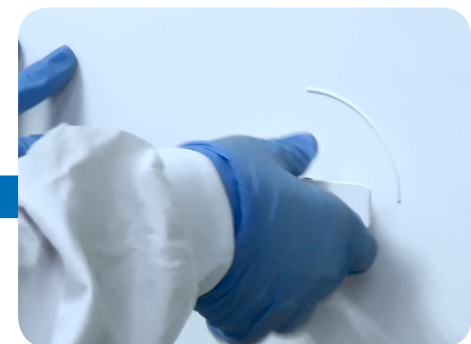
2 Choose the required cycle in the main screen



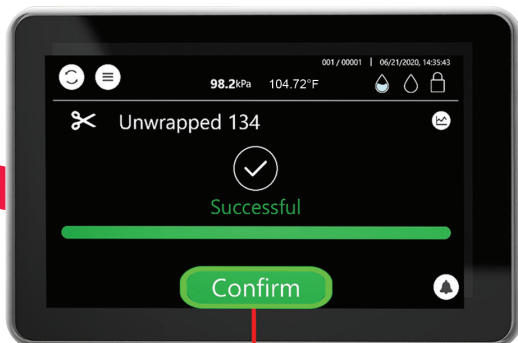
5 The cycle status will be displayed on the "Status Bar". You can stop the cycle at any point by pressing the "Stop" button



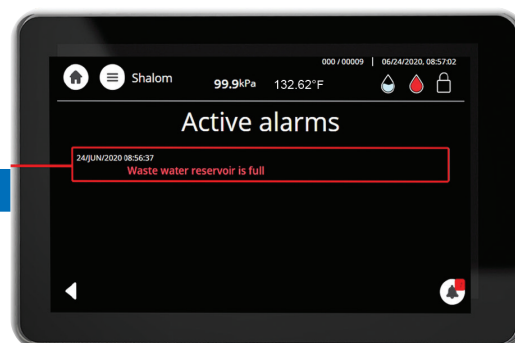
4 Press "Start" to begin the sterilization cycle



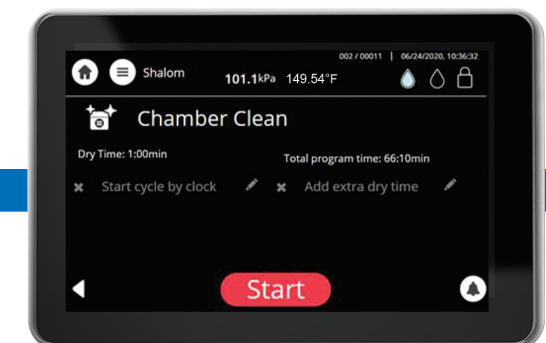
3 Close the door



6 Once the sterilization cycle is complete - press the "Confirm" button in order to open the door.



7 If alerts show on the screen - press the alert (bell) icon. The alert will be listed on the screen.



8 In order to efficiently clean the autoclave chamber (once a week or every 25 cycles), choose "Chamber Clean" cycle and place a Chamber Clean tablet at the back of the chamber. Close the door and begin the cycle.